



FPAC

FINE AND PERFORMING ARTS CENTER



FPAC SPACE DETAILS AND CAPACITY INFORMATION

Recital Hall (concert hall)

- 150 seats
- Used primarily for music programs and lectures
- Designed and built for superb acoustics with minimal amplification
- Acoustically tunable with curtains
- Lighting instruments
 - ETC Source 4 ellipsoidals (26°, 19°)
- Lighting positions
 - 1 automated batten at front-of-house
 - L/R fixed wall boom pipes
- Dimming & Control
 - 30 Strand C21 dimmers
 - ETC Colorsound 20 AV console
 - Available Strand nodes for non-Strand dmx devices
- Sound
 - Yamaha QL1 digital mixer on Dante network
 - Yamaha Rio1608 D2stage box
 - QSC amps and DSP, housed in dedicated room away from theatre
 - Speakers left and right, subwoofer under the stage center
 - 4 hardwired monitor outputs
 - Monitor capabilities to green room, dressing rooms, and scene shop
 - 8 Wireless handheld microphones, 2 wireless lavalier microphones, a large variety of cardioid, omni-directional, and unidirectional microphones.
- Projection
 - Epson Projector and motorized upstage screen
 - Crestron touch panel for projector and screen control
 - HDMI input at control booth and stage.
 - Robocams for video output streaming

Dionne Warwick Theater (proscenium theater)

- 374 seats with the option to add two rows (w/o stage apron total 400 seats)
- Full Wenger Diva Acoustical Shell available for orchestral events
- Limited acoustic tunability with some curtains at the catwalk level
- Spira-lift orchestra pit lift with multiple stop levels. Holds two rows of additional seating.
- Single-purchase counterweight fly system with 30 lines at 8" spacing
- Fully walkable grid
- Fly tower is 1-1/2 times the proscenium height
- Soft goods include cyclorama, black sharktooth scrim, 10 legs, 8 panels, 5 borders, and a mid-stage traveler.

•Lighting instruments

ETC Source 4 ellipsoidals (50°, 36°, 26°, 19°, 14°), Source 4 PARs, Selecon Arena Fresnels (8"), L&E Broad Cycs, Robert Juliat followspots, and eight booms w/bases.

- Lighting positions
 - Two walkable catwalks
 - Five electrics w/Socapex cabling
 - two box booms with stair access
 - Balcony rail
- Dimming & Control
 - Strand C21 dimming system
 - 282 dimmers for performance lighting
 - *30 dimmers for house lighting
 - ETC Ion XE w/2048 outputs
 - Available Strand nodes for non-Strand dmx devices
- Sound
 - Yamaha QL5 digital mixer on Dante network
 - Yamaha Rio1608 D2 L/R stage boxes
 - QSC amps and DSP, housed in dedicated room away from theatre
 - Speakers left, right, and center, subwoofer in the catwalks, delay speakers under the balcony and in the box seats
 - 4 hardwired monitor outputs in pit
 - Monitor capabilities to green room, dressing rooms, and scene shop
 - 8 Wireless handheld microphones, 8 wireless lavalier microphones, a large variety of cardioid, omni-directional, and unidirectional microphones.
- Projection
 - Epson Projector and motorized screen at proscenium
 - Crestron touch panel for projector and screen control
 - HDMI input at control booth and stage.
 - Robocams for video output streaming
 - Digital Cinema Projection service package w/5.1 Dolby sound

Movement Studio (Proscenium-style)

- 48 retractable bleacher seats, total seating 65 with additional floor seats
- Sprung wood dance floor
- Soft goods include legs, cyclorama, scrim
- Mirrors on upstage and stage left walls
- Permanent ballet barres on upstage and stage right walls
- Lighting instruments
 - ETC Source 4 Ellipsoidals (50°, 36°), Source 4 PARs, and L&E Broad Cyps
- Lighting positions
 - 20' high dead-hung 4'x4' lighting grid

- Dimming & Control
 - 48 Strand C21 dimmers
 - Strand Palette console
- Sound
 - Yamaha O1v96
 - 4 hard-wired XLR inputs upstage
 - QSC amps and DSP, housed in booth
 - Speakers left and right upstage
 - 2 Wireless handheld microphones, 4 wireless lavalier microphones.
 - CD Playback
- Projection
 - Epson Projector and upstage motorized screen
 - Controlled through a touch panel with programming for different input sources including: HDMI in booth, HDMI on stage left, Blu-Ray in booth, DVD
 - Touch panel controls screen and projector on/off, blank
 - Touch panel controls volume of all video sources
 - Robocams for video output streaming

BlackBox Theater (flexible)

Approximately 200 tiered portable seats available

Soft goods include legs, cyclorama, scrim

Lighting instruments

- ETC Source 4 Ellipsoidals (50°, 36°, 26°), Source 4 PARs, and L&E

Broad Cycs,

Lighting positions

- 20' high dead-hung lighting grid (4'x4')

Dimming

- 180 Strand C21 dimmers
- Grand MA Dot2

Sound

- Yamaha LS9
- 12 hard-wired XLR inputs around the stage
- QSC amps and DSP, housed in dedicated room away from theatre
- Speakers left and right hung from grid
- 6 Wireless handheld microphones, 4 wireless lavalier microphones.
- CD Playback

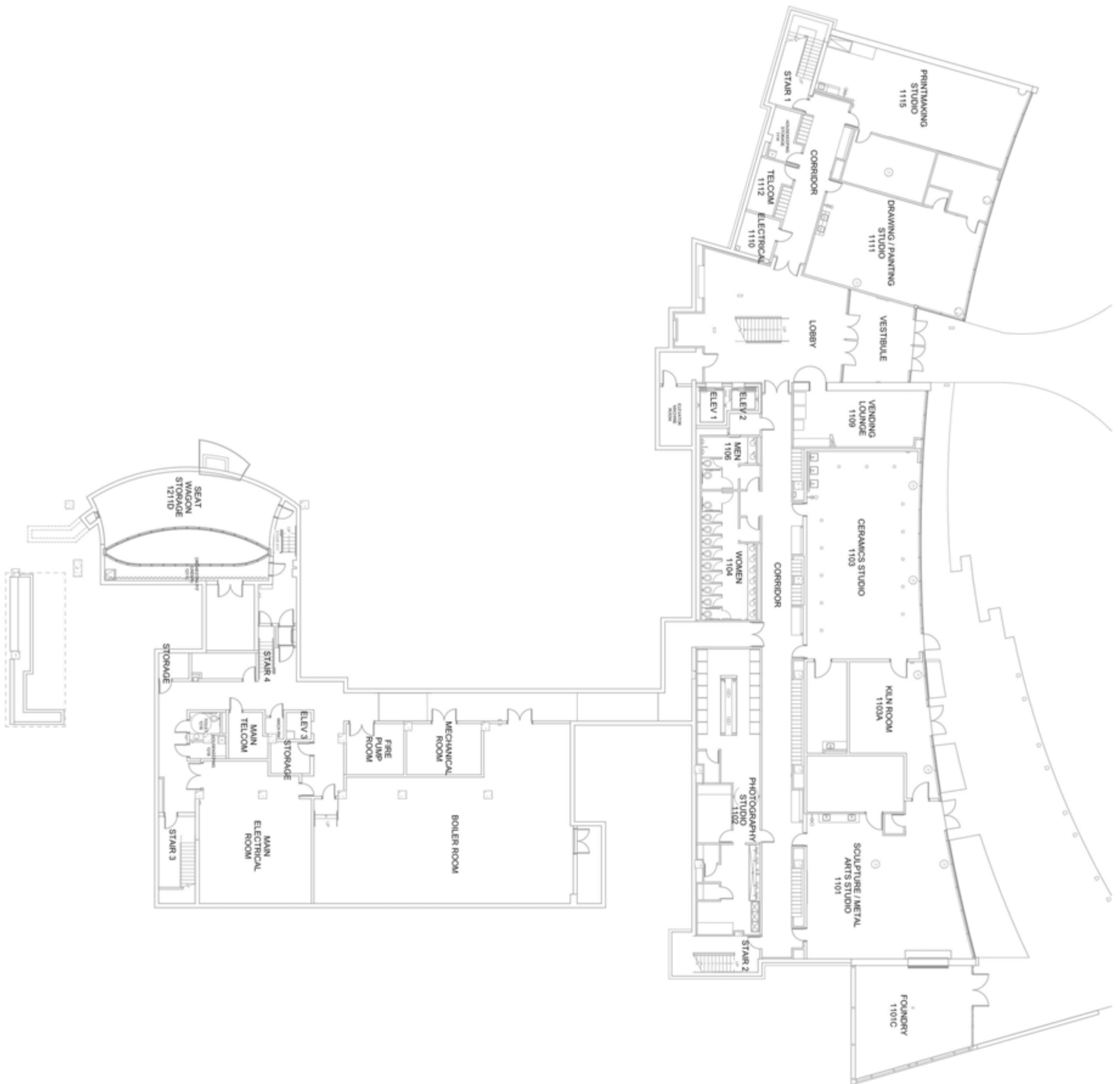
Projection

- Epson Projector and manual screen
- Touch panel with programming for HDMI in booth, HDMI upstage center,
- HDMI onstage right, Blu-Ray and DVD in booth and backstage
- Touch panel controls screen and projector on/off, blank
- Touch panel controls volume of all video sources

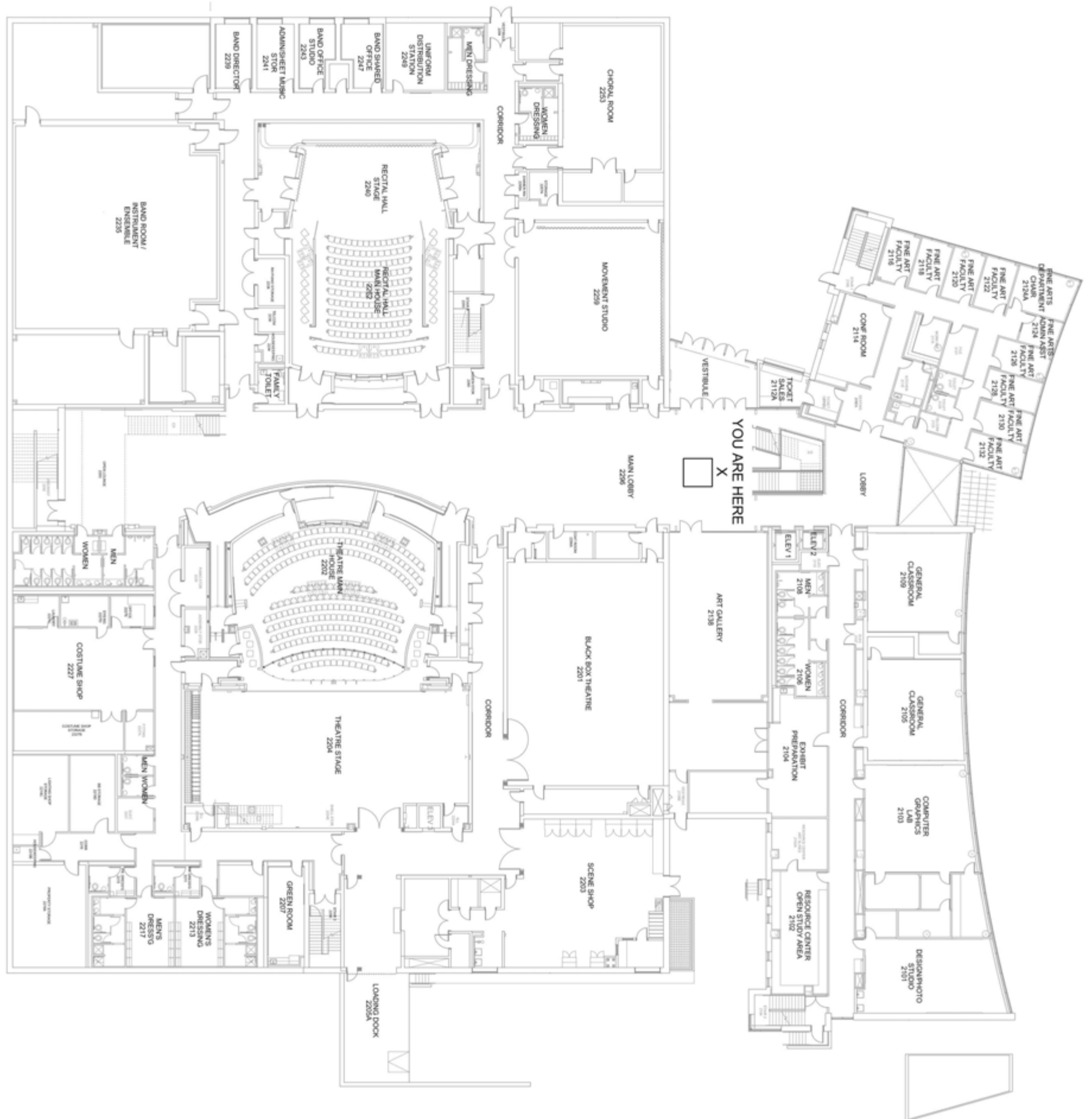
Dressing rooms, green room

- Men's Dressing Room, Women's Dressing Room, and two private dressing rooms

- Dressing room facilities are spacious, with showers (not in the private dressing rooms), lockers, mirrors, and make-up lights.
- Dressing rooms and green rooms have headset communication with both the Dionne Warwick Theater and the Recital Hall.
- Backstage audio monitors are in the dressing rooms and green room and can be used to listen to the Dionne Warwick Theater and the Recital Hall
- Green room has a sink, refrigerator, and microwave.



FPAC - 1ST FLOOR (ART, DESIGN, SCULPTURE & PHOTOGRAPHY STUDIOS)



FPAC - 2ND FLOOR (PERFORMANCE SPACES, GALLERY, CLASSROOMS, OFFICES, COMPUTER LAB, STUDIOS, ETC.)



EYP/
Theatre Projects Consultants

THEATRE PROJECTS
CONSULTANTS

KEY PLAN

PROJECT NAME
FINE AND PERFORMING ARTS CENTER (FPAC)

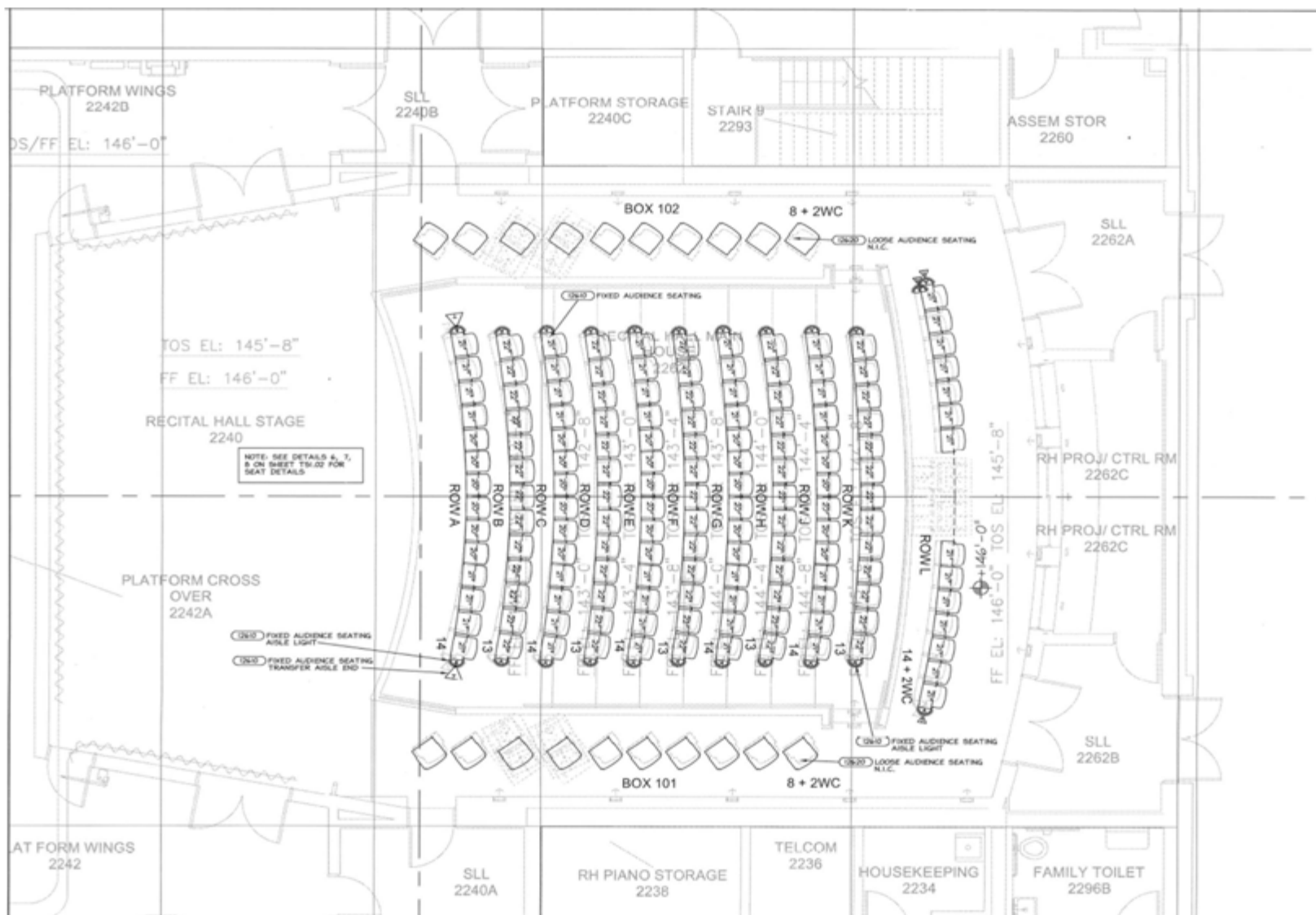
PROJECT NUMBER
DS-17S-646-00

PROJECT NAME
FINE AND PERFORMING ARTS CENTER FOR BOWEN STATE UNIVERSITY

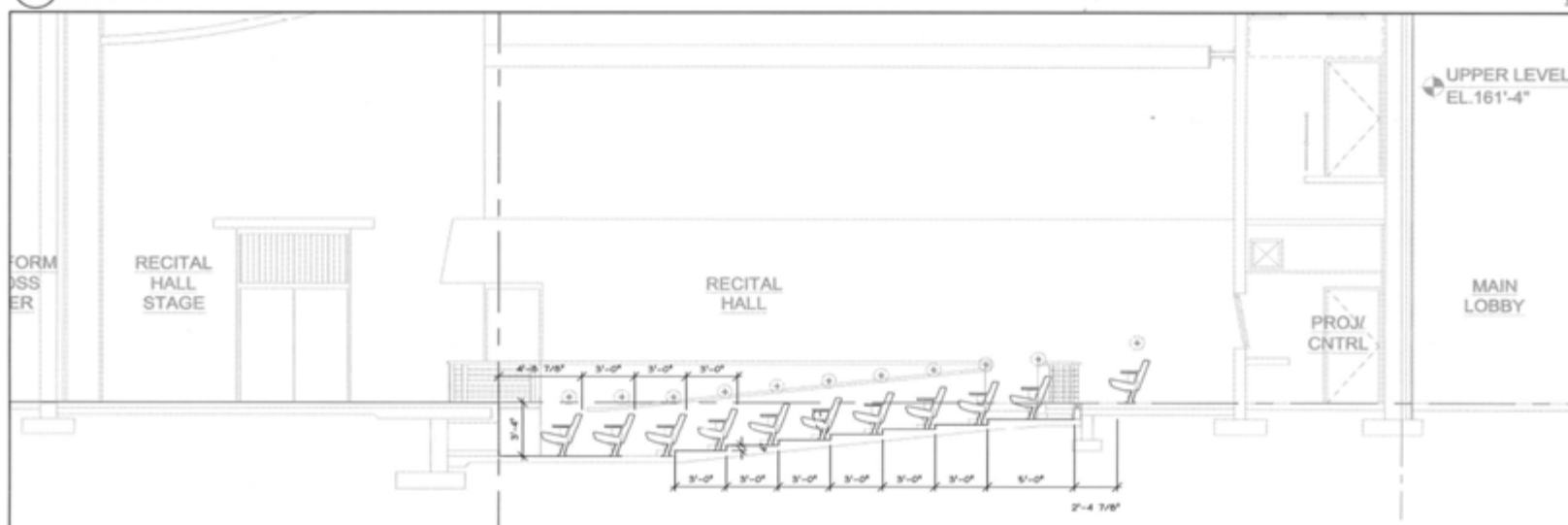
PROJECT NUMBER
ISSUED FOR CONSTRUCTION

DATE	REVISION	DESCRIPTION
17-17-17	1	ISSUED FOR CONSTRUCTION

TS2.01

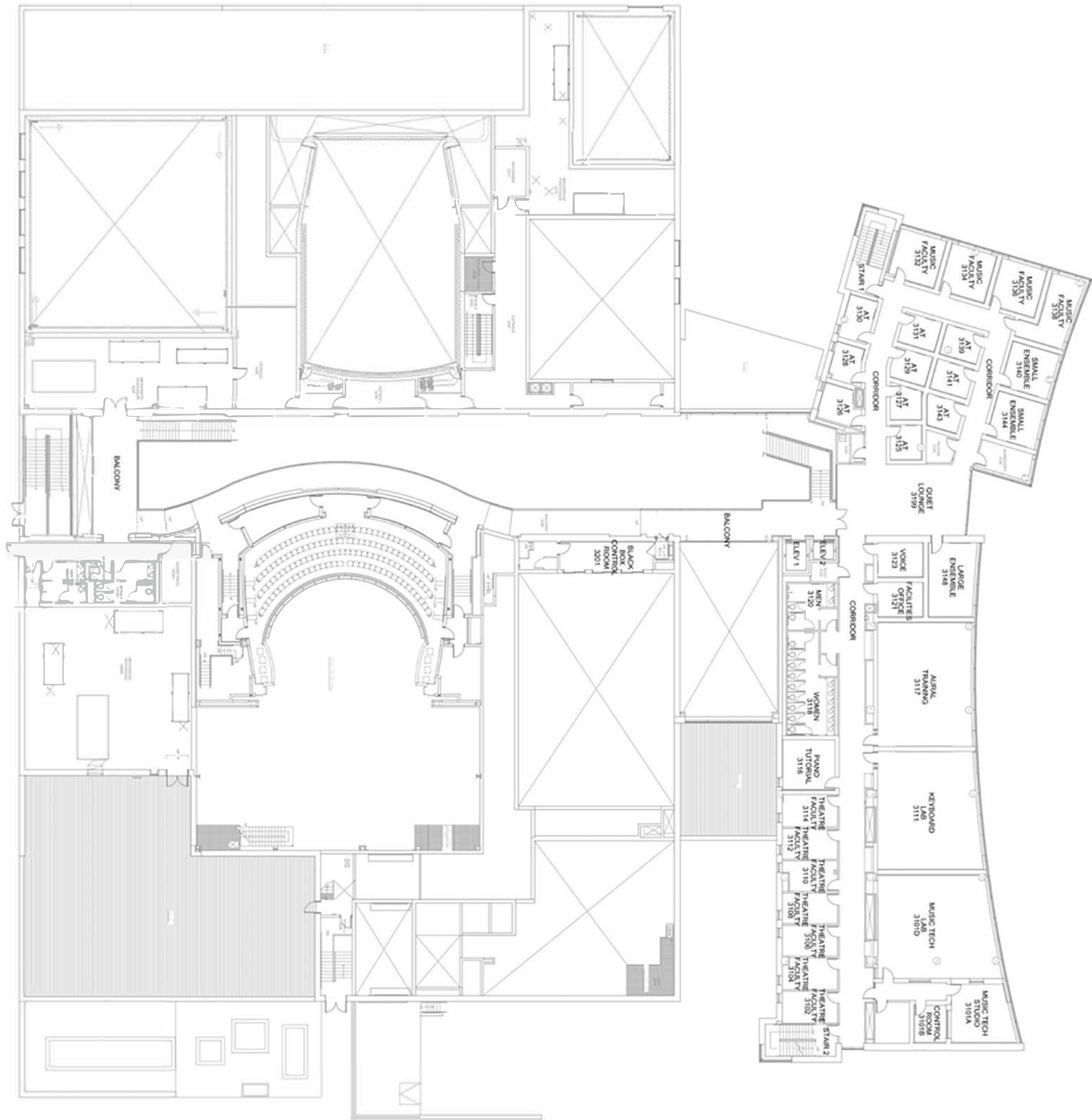


1 MAIN LEVEL PLAN
SCALE: 1/4" = 1'-0"

**FPAC RECITAL HALL SEATING IEW**



FPAC O E ENT ST DIO SEATING



FPAC - 3RD FLOOR, DIONNE WARWICK THEATER BALCONY, MUSIC RECORDING STUDIO, MUSIC TECH LAB, REHEARSAL ROOMS, CLASSROOMS, OFFICES

